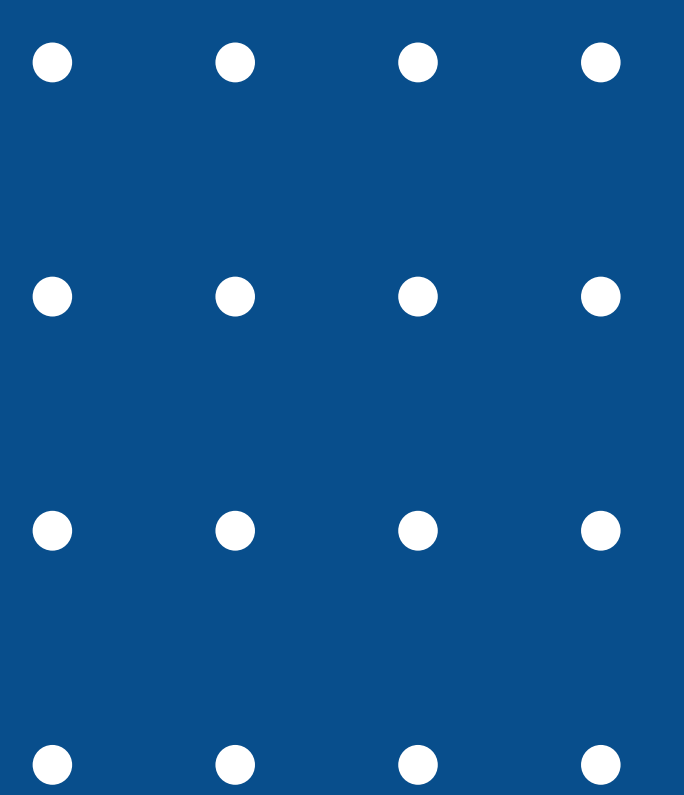


STEAM AUTOCLAVE



Steam Autoclave 0.5m³ (cbm)

Net usable size 0.45cbm or 450 litres



Convenient Stainless steel Autoclave and machine with Siemens Control panel and Easy to open Heavy duty Door.



A: Compressor System with connections



B: High Quality Systems with Accessible System for Ease of Service and Repairs in Long Run.



C: Stainless steel Rust proof Interiors with High Durability

The Characteristics for The Software

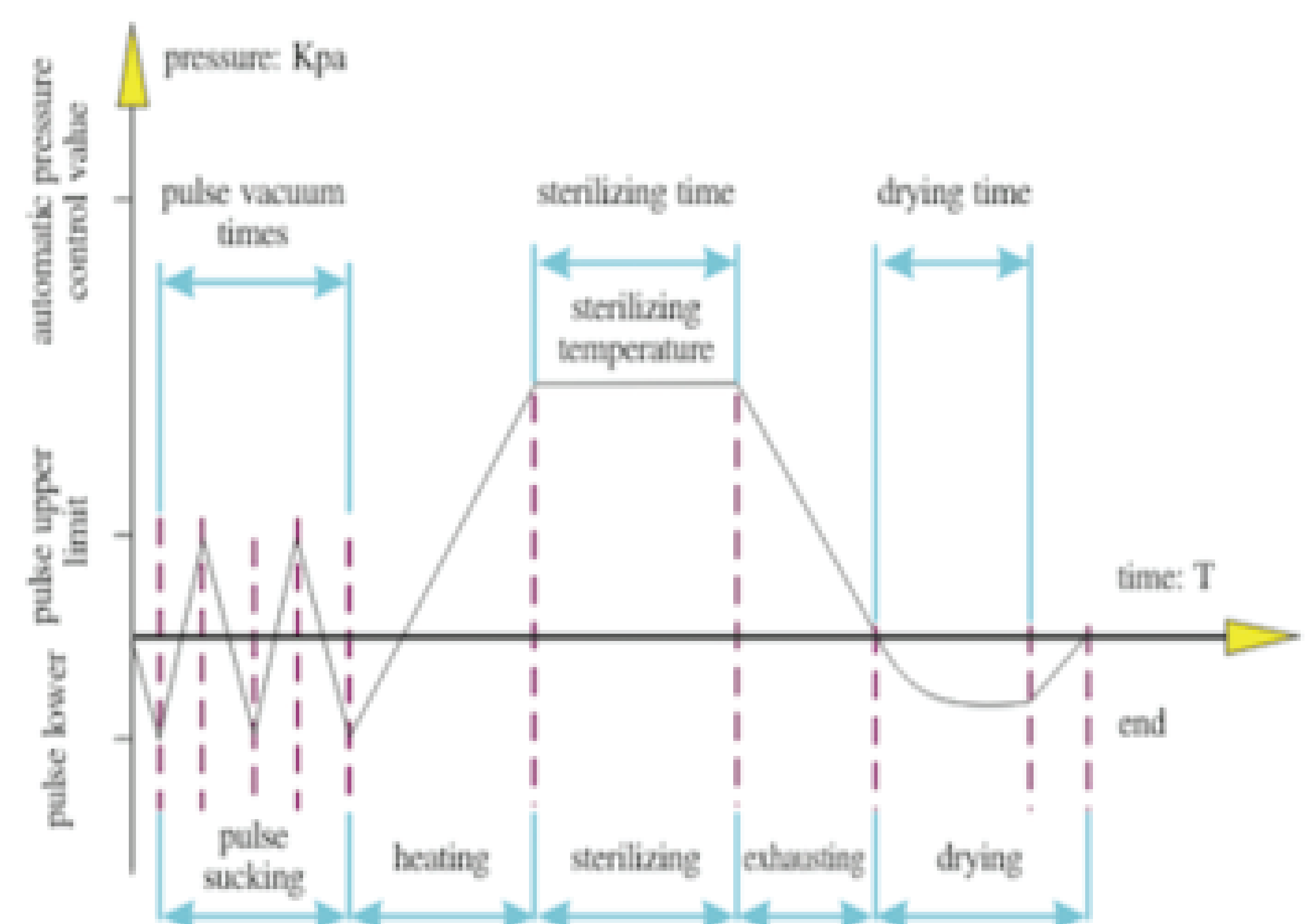
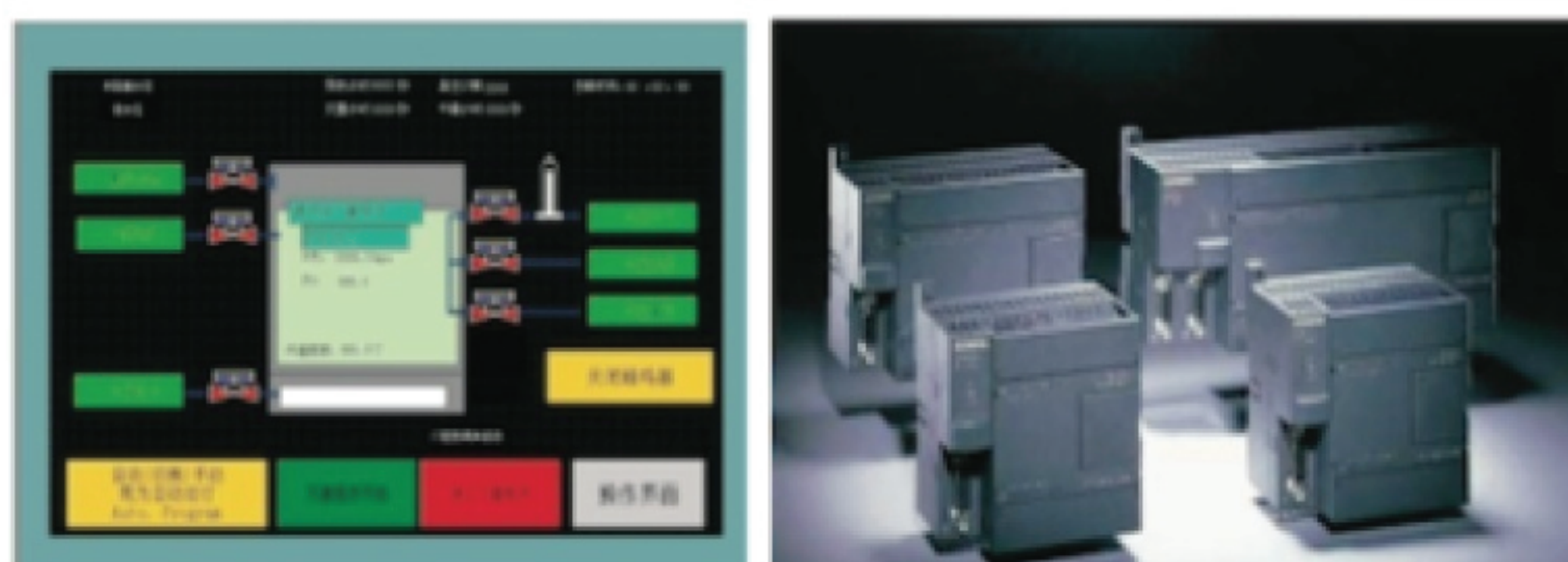
- With Germany Siemens PLC platform independent research and development, human-Machine Interaction ,convenient for operation.
- Software design and manufacture products in strict accordance with the technical requirements for the sterilization process.
- The Operating authority is divided into three levels to the manager, the technologist, and the operators
- Program interlocked, by the program is running, the sealing door can not be open.
- All the alarm and the technical figures can be recorded and print
- If the inner chamber is higher than the safety pressure, the door can not be open.
- Perfect product safety protection measures, 4 level emergency treatment of abnormal state.



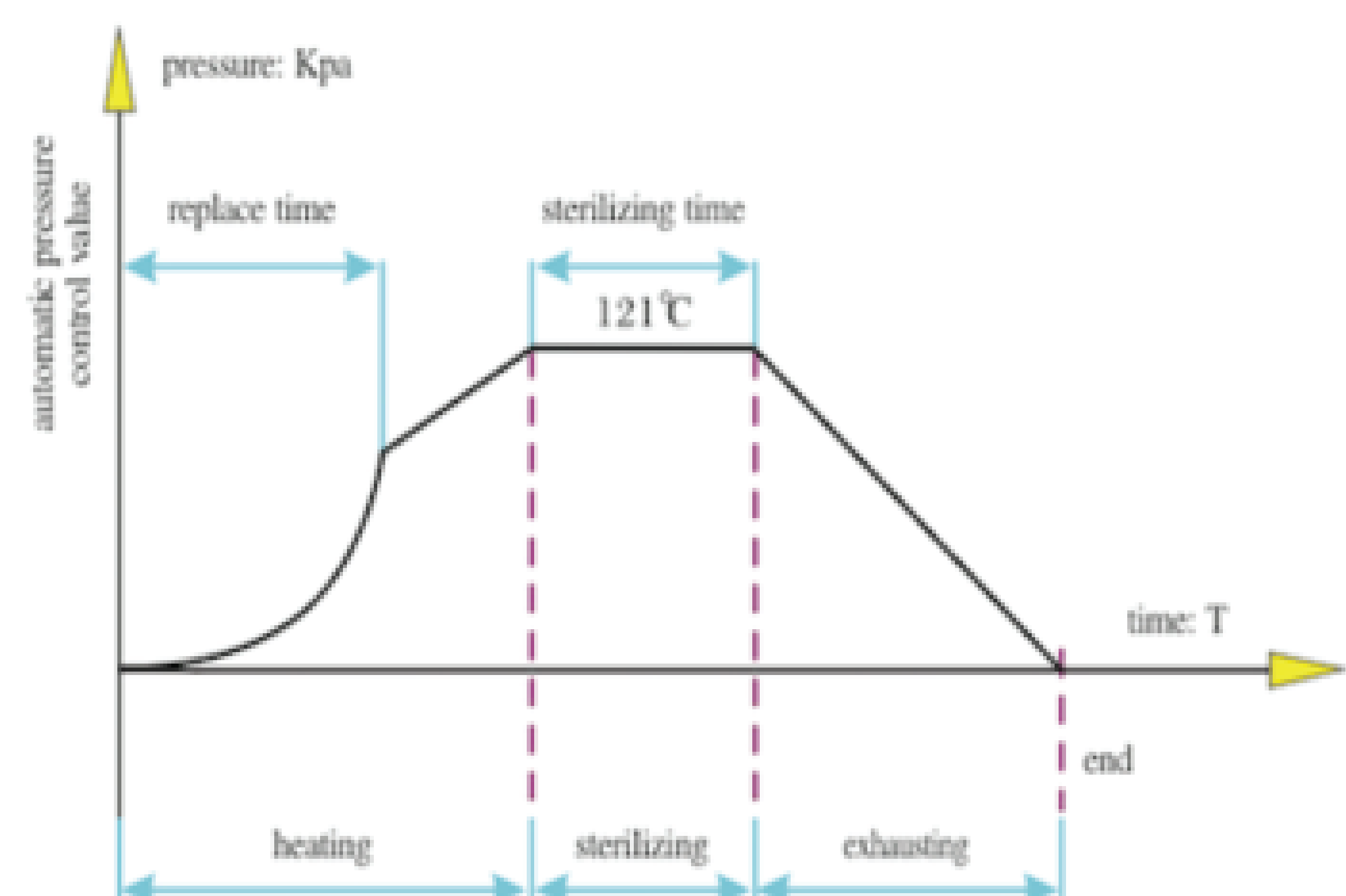
4. Sterilizing Cycles:

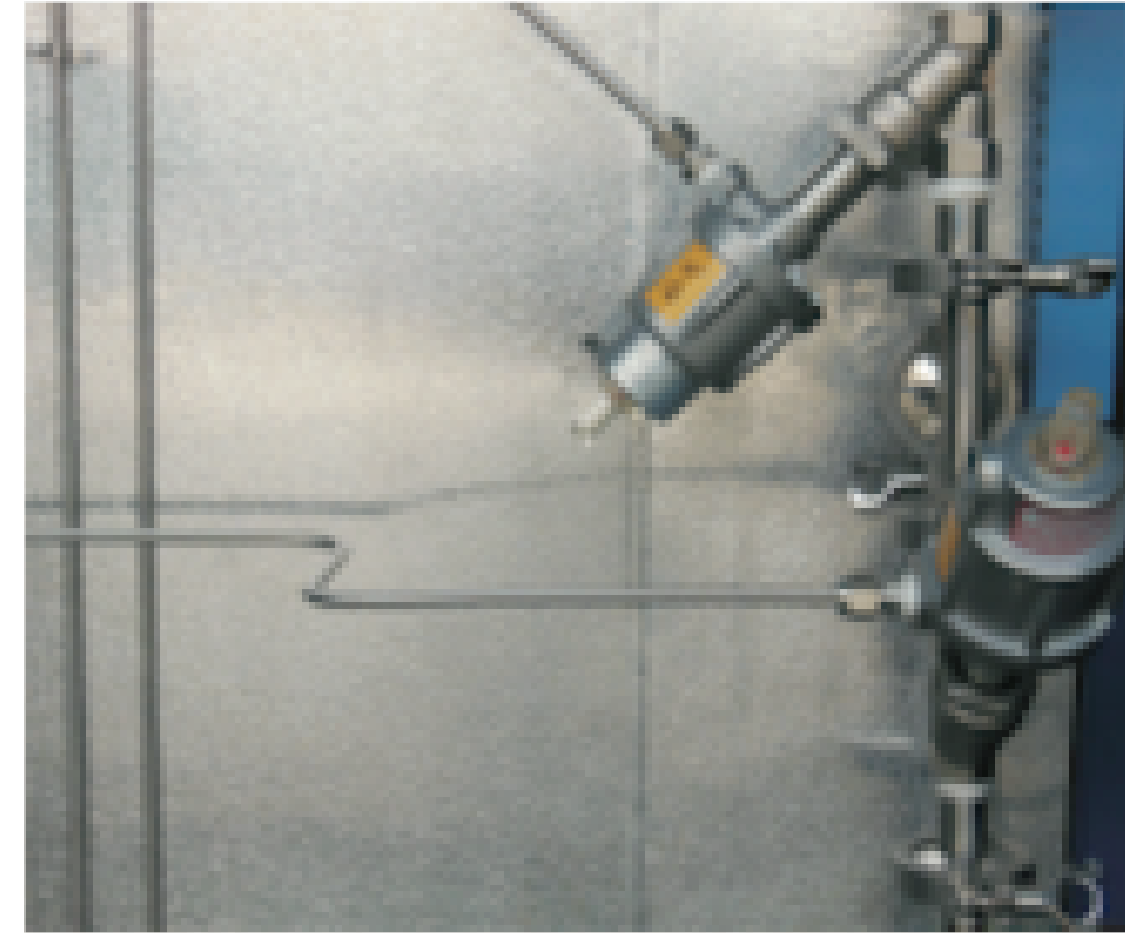
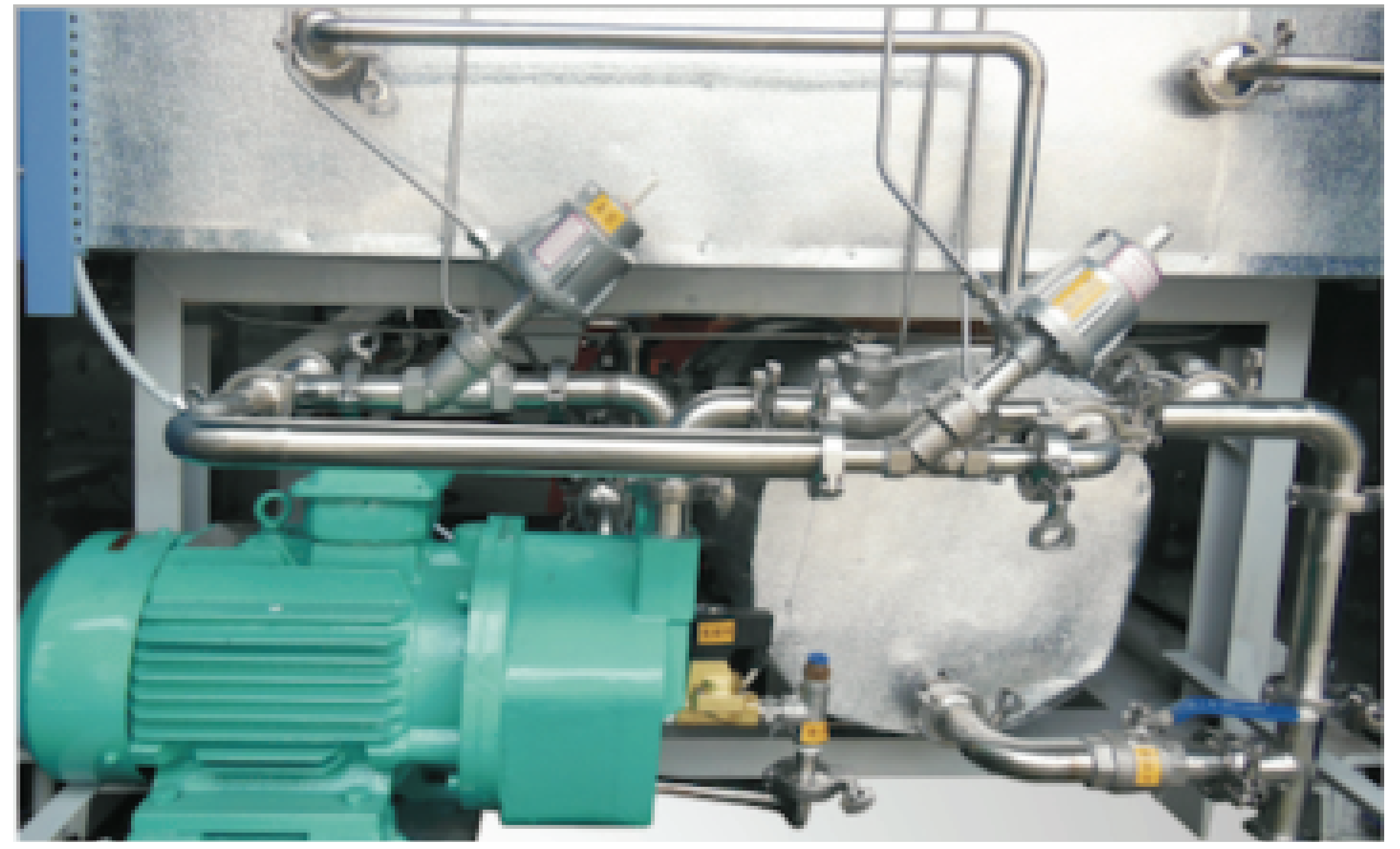
The sterilization cycle to the solid objects:

Applied to the instruments, dressings, utensils and other items.



The sterilization to the fluid, applied to the fluid placed into the non-sealed media which can not bear the high heat and vacuum process.





WG SERIES PULSE VACUUM AUTOCLAVE

1. Main Parameter

Model	Capacity	Inner Chamber Dimension (L*W*H)	Outer Dimension (L*W*H)	Steam Pressure & the Consumption	Water Source Pressure & the Consumption	Power	Net Weight
WG-0.25JS(D)	0.25m ³	800x600x 600mm	1100x1300x1700mm	0.4-0.8Mpa 15KG	0.15-0.3Mpa 35KG	2+24KW	900Kg
WG-0.36JS(D)	0.36m ³	1000x600x600mm	1300x1300x1700mm	0.4-0.8Mpa 20KG	0.15-0.3Mpa 40KG	2+24KW	1000Kg
WG-0.6JS(D)	0.6m ³	1200x610x910mm	1500x1350x1950mm	0.4-0.8Mpa 30KG	0.15-0.3Mpa 45KG	3+36KW	1400Kg
WG-0.8JS(D)	0.8m ³	1500x610x910mm	1800x1350x1950mm	0.4-0.8Mpa 40KG	0.15-0.3Mpa 50KG	3KW	1600Kg
WG-1.2JS(D)	1.2m ³	1500x680x1180mm	1790x1450x1950mm	0.4-0.8Mpa 48KG	0.15-0.3Mpa 55KG	4KW	1800Kg
WG-1.5JS(D)	1.5m ³	1900x680x1180mm	2190x1450x1950mm	0.4-0.8Mpa 55KG	0.15-0.3Mpa 60KG	4KW	2000Kg
WG-2.0JS(D)	2.0m ³	1700x1000x1200mm	2000x1850x2000mm	0.4-0.8Mpa 65KG	0.15-0.3Mpa 65KG	4.5	2500Kg
Design Pressure				0.25 Mpa			
Design Temperature				139°C			

2. The Feature and The Use

'The cabinet utilize the physical characteristics of the saturated steam,which would release large amounts of latent heat and humidity during condensation, and with a period of time to keep the objects at high temperature and moist condition, the main protein of the bacteria would be solidified so that the bacteria can be killed.

'The device is widely used in pharmaceutical, medical, scientific and other industries for the high temperature sterilization, cooling and drying process to the biological products, medical devices, sterile clothing, tools, utensils, media and the other items.

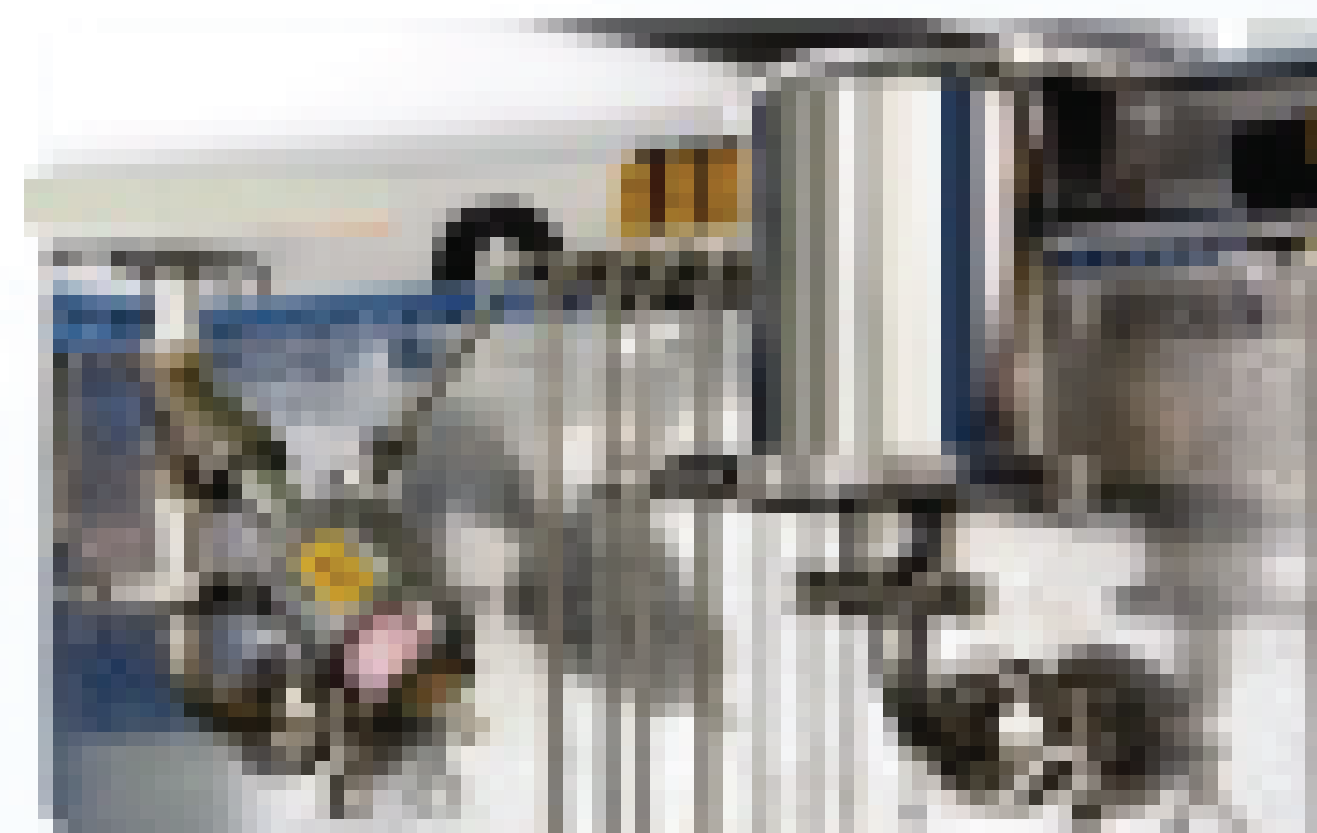
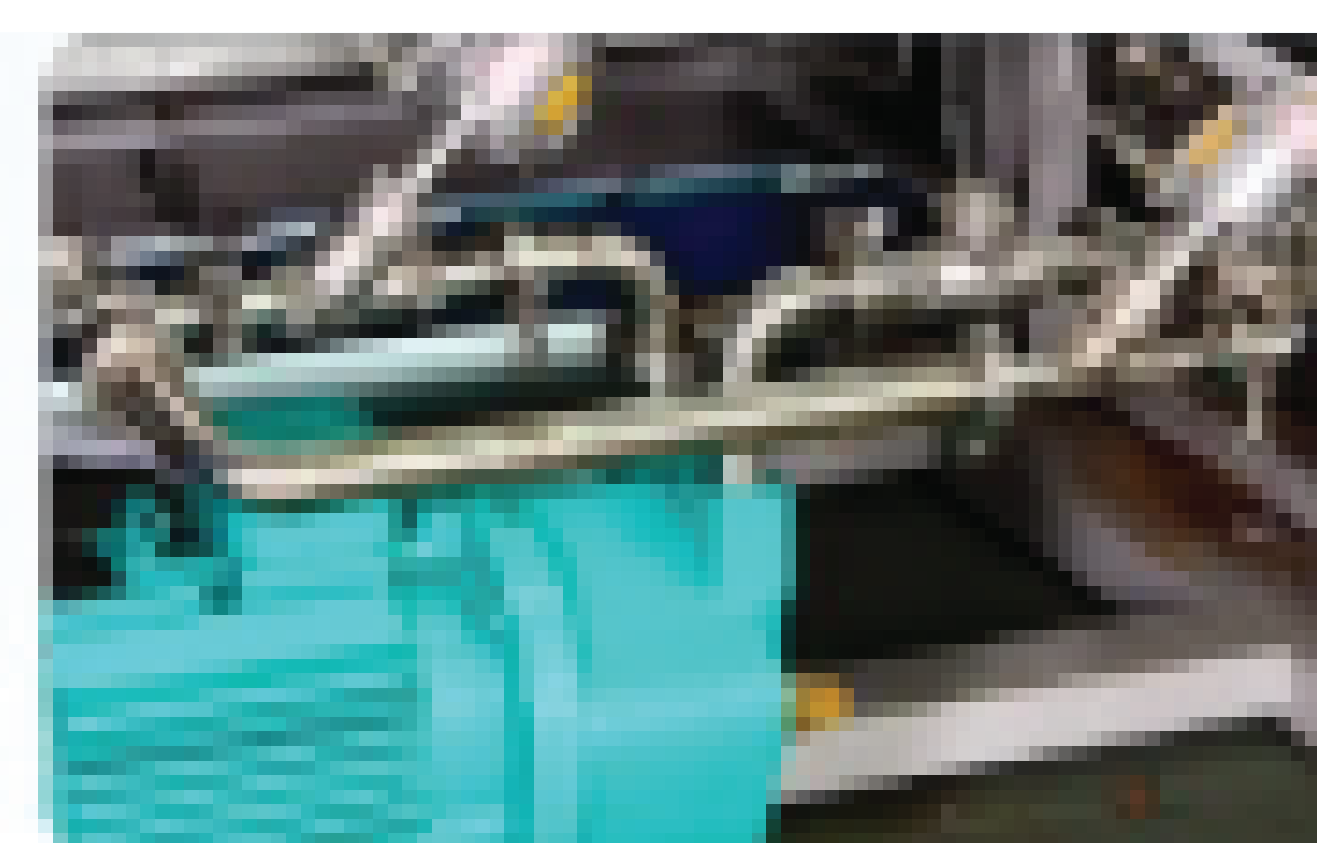
3. The Characteristics

The main body is with horizontal rectangle double layer structure, the inside chamber is made of SUS30408 or SUS31608 stainless steel, the outer layer is made of the brushed decorative sheet, and the there is motorized door or sliding door for choose, pneumatic sealing, and the double door interlocking are strictly in accordance with the GSSD required

'The control system: Adopt the Siemens PLC and Siemens touch screen.

The piping system:

Adopt with the reliable Germany Burkert or GEMU pneumatic angle type valve, water ring vacuum pump and 0.22um high efficiency sterile medical grade filters, the pipe clamp adopts the quick connectors, the piping and the related spares are all according to the sanitation standard.



The series of pulsation vacuum sterilizer uses saturated steam as its sterilization medium. The saturated steam releases a large amount of latent heat properties in the stage of condensation, which presents items to be sterilized with a state of high temperature and humidity. After a period of insulation in such status, sterilization is achieved. The application of pulsating vacuum exhausting has successfully eliminated temperature influence from cold air, and helping the sterilization items to be dried by means of vacuum and dehumidification between the jacketed layers.

Main Parameters and Utilities

Design Pressure	0.245 Mpa	Working Pressure	0.225 Mpa
Design Temperature	139°C	Working Temperature	105~134°C
Vacuum	-0.09 Mpa	Temperature Equilibrium	≤ ± 1°C
Water Source Pressure	0.15~0.3 Mpa	Compressed Air Pressure	0.3~0.7 Mpa
Steam Pressure	0.3~0.7 Mpa	Power	AC 380V, 50Hz Three phase and 5 wire system

Size and Utilities

Model	Overall Size (L*W*H)	Chamber Size (L*W*H)	Steam Consumption	Tap Water Consumption	Power
WG-0.25	1100x1350x1900mm	800x600x600mm	18KG	35KG	2+24KW
WG-0.36	1300x1350x1900mm	1000x600x600mm	25KG	40KG	2+24KW
WG-0.6	1500x1360x1950mm	1200x610x910mm	30KG	45KG	3+36KW
WG-0.8	1800x1360x1950mm	1500x610x910mm	40KG	50KG	3KW
WG-1.2	1750x1440x1950mm	1450x680x1180mm	48KG	55KG	4KW
WG-1.5	2150x1440x1950mm	1850x680x1180mm	55KG	60KG	4KW
WG-2.0	1950x1750x2200mm	1600x900x1400mm	65KG	65KG	4.5KW
WG-2.5	2300x1750x2200mm	1950x900x1400mm	75KG	75KG	6KW
WG-3.0	2700x1750x2200mm	2400x900x1400mm	90KG	90KG	8KW

Structure and Characteristic of The Equipment:

Body of the sterilizer:

- It is designed and manufactured in accordance with GB150 "the Pressure Vessel", GB 8599 "The Technical Requirements of Large Steam Sterilizer --Automatic Control Protocol, and TSG R0004 the "Safety and Technology Specification for Fixed Monitor Vessels" and related inspection procedures.
- Tank of the horizontal rectangular double-deck structure is made from S30408.
- Door sealing: Pneumatic sealing; both doors are interlocked and completely conform to the requirements of the specification.
- The equipment has standard GMP authentication interface.

Sterilizer piping system:

The pipeline is designed with the best configuration. By employing imported parts and quality domestic brands into main components.

Sterilizer control system:

with the adoption of Siemens PLC plus Simens touch screen, this system is easy to implement the program selection, parameter setting, equipment operation, report processing and other functions. It has perfect safety measures. The FO value and the temperature time gives double guarantee for sterilization. A single parameter control is also available. It has a perfect sterilization records.